

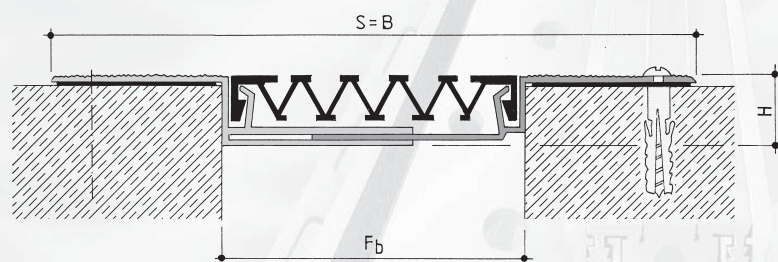
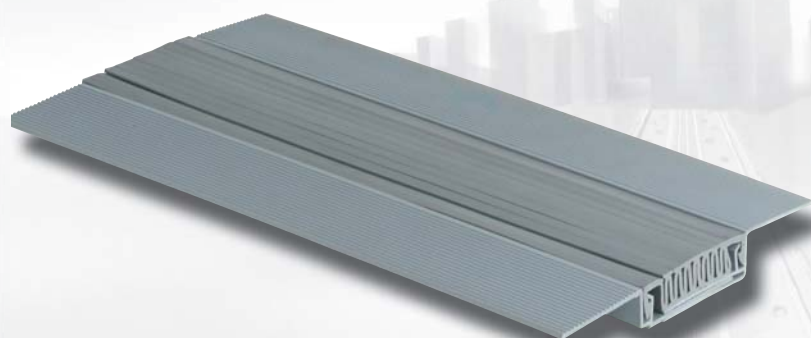
# 320 SERIES

## Wall & Ceiling profile

For use in  
hospitals • airports • shopping centres • rail stations  
• offices • schools

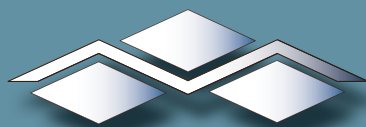
### Features:

- Attractive finish
- High impact resistant PVC frame with cellular aluminium construction with Nitriflex rubber insert
- Insert colours: white or grey. Alternative RAL coloured inserts are available - minimum order quantity applies.
- Available with cellular rubber sealing strips behind flanges to compensate in irregularities in substrate.
- Standard 4 metre lengths
- Corner/angle options
- Interchangeable insert



- Also available as a wall/Corner profile

Profile reference	320-050	320-080	320-120	320-120
Fb - Joint widths upto (mm)	50	80	100	120
H - Heights (mm)	15	15	15	15
B - Overall width (mm)	140	170	190	210
S - Visible width (mm)	140	170	190	210
Movement Total (+/- mm)	20 (+/-10)	30 (+/-15)	35 (+20/-15)	50 (+25)



**Movement Joints (UK) Ltd,**  
Unit 3, 57 Thorby Avenue, March, Cambridgeshire PE15 0AZ United Kingdom  
Tel: 01354 60 79 60 Fax: 01354 60 78 33  
Web: [www.mjuk.co.uk](http://www.mjuk.co.uk) e-mail: [info@mjuk.co.uk](mailto:info@mjuk.co.uk)

**IMPORTANT:** Whilst all reasonable care is taken in compiling technical data on the company's products, all recommendations or suggestions regarding the use of such products are made without guarantee since the conditions of use are beyond the company. It is the customers responsibility to satisfy himself that each product is fit for the purpose for which he intends to use it and that the actual conditions of use are suitable.