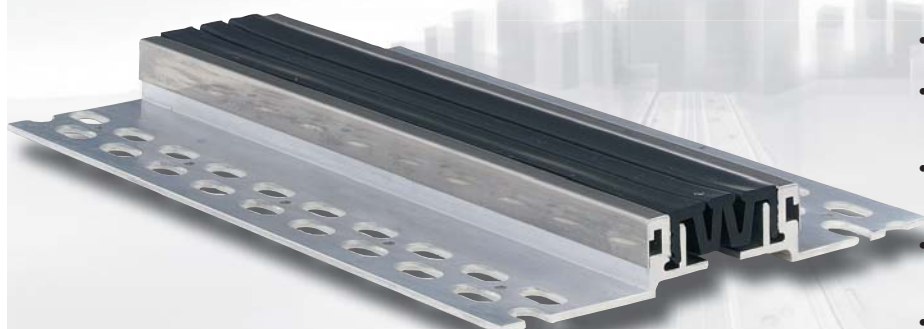


445/e-050 - Stainless steel capping

445/m-050 - Brass capping

Stainless steel + brass capped

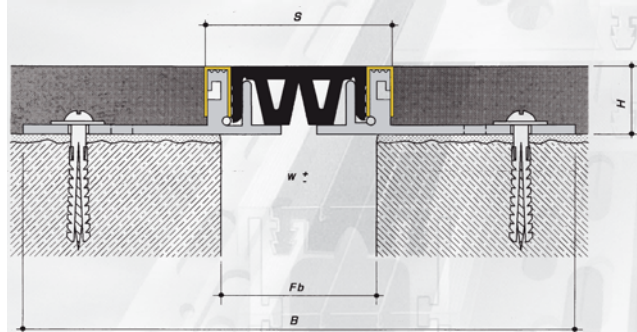
For use in
hospitals • airports • shopping centres • rail stations
• sport stadiums • car parks • factories



445/e-050.

Features:





- Attractive finish
- aluminium construction with replaceable Nitriflex rubber insert
- Insert can be supplied as a continuous length up to 20 metres
- Smooth insert option available for hospitals and clean rooms
- Insert Colours: Black or Grey. (Insert to RAL colours available - minimum order quantity applies)
- Standard 4 metre lengths
- Smooth insert option available for clean rooms
- Movement +/-10mm with Standard Insert & +/-7mm for smooth insert option
- Floor to wall options
- Ability to mix leg heights to accommodate differing screed depths

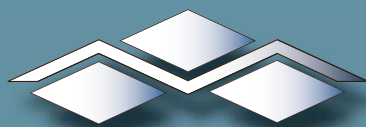


445/m-050. Smooth insert option

Installation:

Laid on to epoxy mortar levelling bed, nominal 10mm deep and mechanically fixed symmetrically at 300mm centres, with M8 x 110mm resin anchor fixing or M10 concrete self tapping type bolt. Plug and Screw fixing acceptable in light pedestrian use areas only.

Profile reference	445/e-050 Stainless steel capped	445/m-050 Brass capped
Fb - Joint widths upto (mm)	50mm	50mm
H - Heights (mm)	21 / 26 / 36 / 51 mm	21 / 26 / 36 / 51 mm
B - Overall width (mm)	180mm	180mm
S - Visible width (mm)	62mm	62mm
Accommodation of movement (mm)	20mm (+/-10mm)	20mm (+/- 10mm)
Nitriflex & Aluminium	Nitriflex & Aluminium	Nitriflex & Aluminium
Load Bearing capacity (kN)	  25kN	  25kN



Movement Joints (UK) Ltd,
Unit 3, 57 Thorby Avenue, March, Cambridgeshire PE15 0AZ United Kingdom
Tel: 01354 60 79 60 Fax: 01354 60 78 33
Web: www.mjuk.co.uk e-mail: info@mjuk.co.uk

IMPORTANT: Whilst all reasonable care is taken in compiling technical data on the company's products, all recommendations or suggestions regarding the use of such products are made without guarantee since the conditions of use are beyond the company. It is the customers responsibility to satisfy himself that each product is fit for the purpose for which he intends to use it and that the actual conditions of use are suitable.