

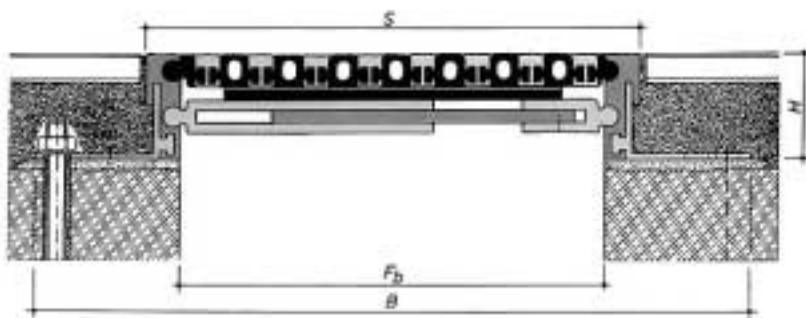
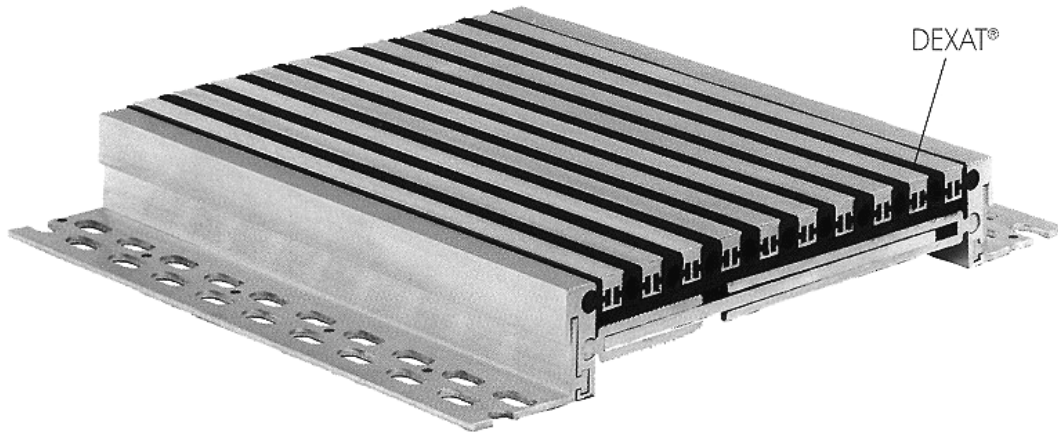
Movement Joints (UK) Ltd

P O Box 10, Wisbech, Cambridgeshire PE13 4AN
 Tel: 01945 450736 Fax: 01945 450819
 Web: www.mjuk.co.uk
 e-mail: info@mjuk.co.uk

800 series

Floor Profiles

For joints widths greater than 100mm



Also available as a wall/corner profile

| Profile Number | 800-120 | 800-140 | 800-160 | 800-180 | 800-200 | 800-280 | 800-350 |
|--------------------------------|-----------------------------|----------------|----------------|----------------|----------------|-----------------|-----------------|
| Fb - Joint widths up to (mm) | 120 | 140 | 160 | 180 | 200 | 280 | 350 |
| H - Heights (mm) | 43 / 48 / 58 / 63 / 68 / 88 | | | | | | |
| B - Overall width (mm) | 220 | 240 | 260 | 280 | 300 | 400 | 470 |
| S - Visible width (mm) | 130 | 150 | 170 | 190 | 210 | 290 | 360 |
| Accommodation of movement (mm) | 18 (+/- 9) | 20 (+/- 10) | 24 (+/- 12) | 28 (+/- 14) | 30 (+/- 15) | 70 (-30/+40) | 90 (-40/+50) |
| Insert colours | Black, grey | | | | | | |
| Material | Nitriflex®, aluminium | | | | | | |
| Standard Length (metres) | 4 | | | | | | |
| Load Bearing capacity (kN) | | | | | | | |

Applications: For all finishes (Screed, natural stone, cast stone etc), for use with wide joints and in mining or subsidence areas

Profile characteristics: Absorption of vertical movement, attractive design

Profile installation: See tips for planning and installation

IMPORTANT

Whilst all reasonable care is taken in compiling technical data on the company's products, all recommendations or suggestions regarding the use of such products are made without guarantee since the conditions of use are beyond the company. It is the customers responsibility to satisfy himself that each product is fit for the purpose for which he intends to use it and that the actual conditions of use are suitable.

